



WILDLIFE DANGERS FACTS

Be prepared with these tips when planning a vacation or an outdoor hike in these regions:

GREAT PLAINS

GULF COAST

MIDWEST

NORTHEAST AND NEW ENGLAND

NORTHWEST AND ALASKA

ROCKY MOUNTAINS/HIGH DESERT

SOUTHEAST

SOUTHWEST AND CALIFORNIA



AT VCA ANIMAL HOSPITALS, WE CARE

GREAT PLAINS

When walking or hiking, pet owners should:

KEEP DOGS
**ON A
LEASH**

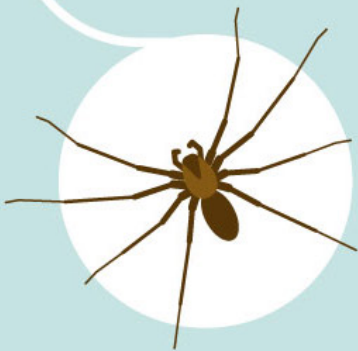
**ALWAYS
SUPERVISE**
PETS

**AVOID
CHASING**
WILDLIFE

**VISIT A
VETERINARIAN**
AFTER AN INJURY



WILDLIFE DANGERS



**BROWN RECLUSE
SPIDERS**
NEST UNDER FOLIAGE,
MAY BITE IF DISTURBED



SKUNKS
LIKE BATS MAY CARRY
THE RABIES VIRUS

BATS
A KEY SOURCE OF
RABIES INFECTION
IN NORTH AMERICA



RATTLESNAKES
THIS VENOMOUS
SPECIES COILS
BEFORE STRIKING



GULF COAST

When walking or hiking, pet owners should:

KEEP DOGS
**ON A
LEASH**

**ALWAYS
SUPERVISE**
PETS

**AVOID
CHASING**
WILDLIFE

**VISIT A
VETERINARIAN**
AFTER AN INJURY

WILDLIFE DANGERS

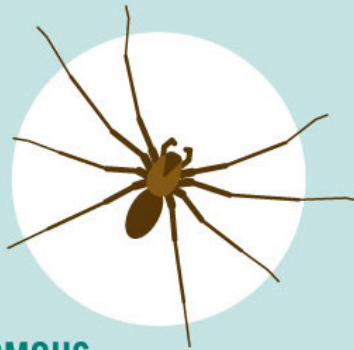


FIRE ANTS
PAINFUL STINGS THAT
ARE NO FUN FOR DOGS
SNIFFING AROUND



**BLACK WIDOW
SPIDERS**
VENOM 15X STRONGER
THAN RATTLESNAKES

**BROWN RECLUSE
SPIDERS**
NEST UNDER FOLIAGE,
MAY BITE IF DISTURBED



ALLIGATORS
OPPORTUNISTIC
PREDATORS WHO
DWELL NEAR WATER



**VENOMOUS
COTTONMOUTH
SNAKES**
OPEN WHITE MOUTH
AS A "WARNING FLAG"
IF DISTURBED



BATS
A KEY SOURCE OF
RABIES INFECTION
IN NORTH AMERICA

MIDWEST

When walking or hiking, pet owners should:

KEEP DOGS
**ON A
LEASH**

**ALWAYS
SUPERVISE**
PETS

**AVOID
CHASING**
WILDLIFE

**VISIT A
VETERINARIAN**
AFTER AN INJURY



WILDLIFE DANGERS

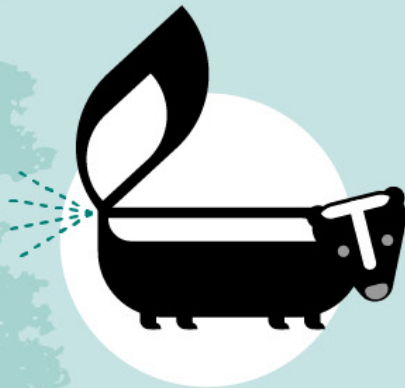


BLACK BEARS
MAY CHASE A DOG IF
THEY FEEL THEIR CUBS
ARE THREATENED



PORCUPINES
QUILLS CAN MIGRATE
THROUGH PIERCED SKIN
TO VITAL ORGANS

SKUNKS
RAISE THEIR TAIL
AS A WARNING AND
CAN SPRAY UP TO
10 FEET AWAY



RACCOONS
MAY HAVE RABIES
OR ROUNDWORM
PARASITES



BATS
A KEY SOURCE OF RABIES
INFECTION IN NORTH AMERICA

NORTHEAST AND NEW ENGLAND

When walking or hiking, pet owners should:

KEEP DOGS
**ON A
LEASH**

**ALWAYS
SUPERVISE**
PETS

**AVOID
CHASING**
WILDLIFE

**VISIT A
VETERINARIAN**
AFTER AN INJURY



WILDLIFE DANGERS



MOOSE
MAY STOMP,
CHARGE OR KICK
IF PROVOKED



BLACK BEARS
MAY CHASE A DOG IF
THEY FEEL THEIR CUBS
ARE THREATENED

**COPPERHEAD
RATTLESNAKES**
THIS VENOMOUS SPECIES
COILS BEFORE STRIKING



RACCOONS
MAY HAVE RABIES
OR ROUNDWORM
PARASITES



DEER TICKS
BITES CAN CAUSE
LYME DISEASE



BATS
A KEY SOURCE OF
RABIES INFECTION
IN NORTH AMERICA

NORTHWEST AND ALASKA

When walking or hiking, pet owners should:

KEEP DOGS
**ON A
LEASH**

**ALWAYS
SUPERVISE**
PETS

**AVOID
CHASING**
WILDLIFE

**VISIT A
VETERINARIAN**
AFTER AN INJURY



WILDLIFE DANGERS



MOOSE
MAY STOMP,
CHARGE OR KICK
IF PROVOKED



GRIZZLY BEARS
CAN RUN UP TO
35 MPH—MUCH FASTER
THAN DOGS!

GRAY WOLVES
CAN SEE DOGS
AS COMPETITION



PORCUPINES
QUILLS CAN
MIGRATE THROUGH
PIERCED SKIN
TO VITAL ORGANS



COYOTES
CAN CLIMB,
JUMP OVER OR
DIG AROUND FENCES



BATS
A KEY SOURCE OF
RABIES INFECTION
IN NORTH AMERICA

ROCKY MOUNTAINS/HIGH DESERT

When walking or hiking, pet owners should:

KEEP DOGS
**ON A
LEASH**

**ALWAYS
SUPERVISE**
PETS

**AVOID
CHASING**
WILDLIFE

**VISIT A
VETERINARIAN**
AFTER AN INJURY



WILDLIFE DANGERS



BLACK BEARS
MAY CHASE A DOG IF
THEY FEEL THEIR CUBS
ARE THREATENED



ELKS
MAY CHARGE IF
THREATENED

BATS
A KEY SOURCE OF
RABIES INFECTION
IN NORTH AMERICA



COYOTES
CAN CLIMB,
JUMP OVER OR
DIG AROUND FENCES



**BLACK WIDOW
SPIDERS**
VENOM 15X STRONGER
THAN RATTLESNAKES



**VENOMOUS
GREAT BASIN
RATTLESNAKES**
HIDES AND "RATTLES" BEFORE
POSSIBLY STRIKING

SOUTHEAST

When walking or hiking, pet owners should:

KEEP DOGS
**ON A
LEASH**

**ALWAYS
SUPERVISE**
PETS

**AVOID
CHASING**
WILDLIFE

**VISIT A
VETERINARIAN**
AFTER AN INJURY



WILDLIFE DANGERS



**BLACK WIDOW
SPIDERS**
VENOM 15X STRONGER
THAN RATTLESNAKES

IF THREATENED,
TARANTULAS
FLING BARBED HAIRS
FROM THEIR ABDOMEN
AT CURIOUS EYES



SNAKES
SOME SPECIES
CAN BITE UNDERWATER
OR SLITHER UP TREES

ALLIGATORS
OPPORTUNISTIC
PREDATORS WHO
DWELL NEAR WATER



DON'T LICK
BUFO TOADS!
BUFOTOXIN IS VERY
DANGEROUS FOR PETS



FIRE ANTS
PAINFUL STINGS THAT
ARE NO FUN FOR DOGS
SNIFFING AROUND

SOUTHWEST AND CALIFORNIA

When walking or hiking, pet owners should:

KEEP DOGS
**ON A
LEASH**

**ALWAYS
SUPERVISE**
PETS

**AVOID
CHASING**
WILDLIFE

**VISIT A
VETERINARIAN**
AFTER AN INJURY

WILDLIFE DANGERS

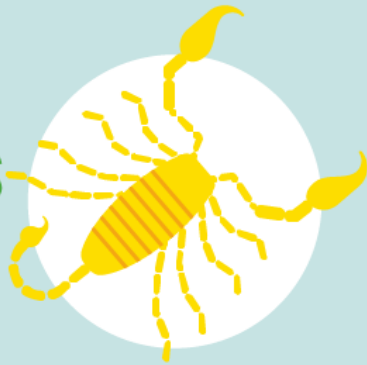


RATTLESNAKES
THIS VENOMOUS
SPECIES COILS
BEFORE STRIKING



BEEES
STINGERS KEEP OOOZING
VENOM THAT CAUSES
SWELLING

BARK SCORPIONS
POISONOUS STINGS



GILA MONSTERS
ATTACK BY LATCHING
ONTO PREDATORS WITH
A STRONG JAW WHILE
INJECTING VENOM



JAVELINAS
FIERCELY PROTECTIVE AND
MAY MISTAKE DOGS FOR PREDATORS